



Allenhouse
PUBLIC SCHOOL
ROOMA, KANPUR



We
are

**VISIONARIES
ACHIEVERS
ALLENHOUSE**





We are Empowered with Comprehensive Holistic Development

In adherence to the Central Board of Secondary Education (CBSE), our holistic development approach thoroughly evaluates students across 9 key aspects. As a result, we furnish you with comprehensive insights through a set of nine detailed reports on:



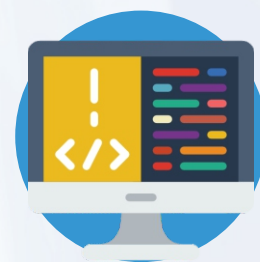
Academics

Focusing on core subjects like **mathematics, science, languages, and social sciences**, with an emphasis on practical application



Cambridge Assessment
English

Authorised Exam Centre



New-Age Skills

Preparing students for the demands of the modern world by incorporating subjects like **coding, animation, robotics, and entrepreneurship**



Cultural Arts

Fostering a love for cultural arts, such as **music, art, drama, dance, creative writing, photography, debates, declamations**, and more



Sports

Presenting a choice of **17+ sports options** and evaluating not only athletic performance but also teamwork, leadership, and sportsmanship



Smart Skills For Life

Inculcating adaptability, creative thinking, problem-solving ability, empathy, emotional intelligence, and **qualities that go beyond traditional academics**



Social Responsibility

Creating awareness of societal issues, encouraging efforts towards positive change and **assessing engagement in community services**



Well-Being

Emphasising the importance of a healthy lifestyle and **evaluating physical health, mental well-being and the spectrum of choices**



National Cadet Corps

Encouraging participation in the NCC to emphasize **character building, leadership** and instills values of **"Unity and Discipline"**



Ultra-Modern Swimming Pool



Well-Stocked Library



Dynamic Indoor Play Area

We Blossom in
Modern
Learning Spaces



Specialised Language Room



Outdoor Sports Area



Auditorium for Creative Expression



Specialised Maths Lab

Our commitment to excellence thrives in cutting-edge learning environments. Our modern spaces inspire collaboration, critical thinking, and holistic development, shaping future leaders.



Well-Equipped Science Labs



Computer Lab with Cutting Edge Technologies



Digitally-Enabled Interactive Classrooms

We Flourish with a Distinctive Educational Approach

At the forefront of educational transformation, Allenhouse is pioneering change. Our inclusive and innovative learning model has been aligned with the government's NEP 2020 guidelines.



**STEM
Integration**



**Design Thinking
Methodology**



**Experiential
Education**



**Parent
Partnerships**



**Educational
Tours**



**Personalised
Learning Pathways**



**Holistic
Assessment**



**Global Citizenship
Education**



**Ideal Student
Teacher Ratio**



**International
Collaborations
for Exposure**



**Community Service
Programs**



**Personality
Development
Classes**



**Wellness
Initiatives**



**Skill-Based
Learning**



**1:1 Student Career
Counselling**

We are Mentored Inspired

An experienced faculty, chosen from across India, is regularly trained to foster new-age learning and mentor new possibilities. In addition to teachers, our students also draw inspiration from other schoolmates.

Excitingly, successful programs from different Allenhouse branches will now reach every branch, offering all students the chance to participate in a myriad of meticulously organised endeavours.



Model United Nations Conference



Entrepreneurship Program



Model G20 Summit



Allen Internship Certifications



Macmillan Education Empowering Our Budding Authors



Vibrant Dances



Supervised Taekwondo Classes



Green Initiatives



Preschool Team Adventures



Forms of Art



Mindful Yoga Sessions

We Engage in Diverse Activities



Competitive Cricket Tournaments



Allenthon - Annual Sports Day



Mental Wellness Parade



Scholastic Fest



Expert-Led Table Tennis Sessions



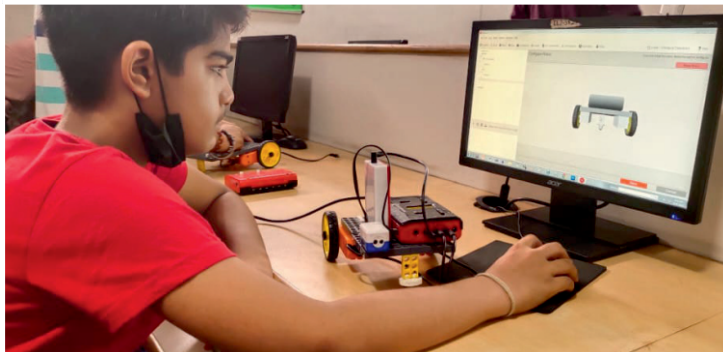
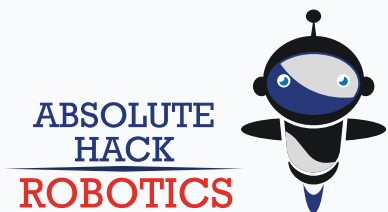
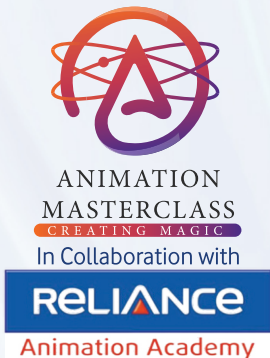
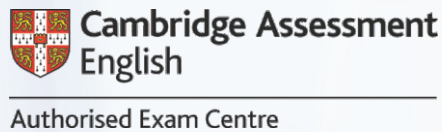
Educational Excursions



Action-Packed Basketball Matches

We are Future-Ready

Partnered with India's most esteemed organisations, the Allenhouse Group introduces exclusive skills-based programs. These are designed to equip the learners with 21st-century skills, preparing them for the future through immersive, hands-on learning and comprehensive training modules.



Critical thinking



Communication



Media literacy



Creativity



Technology literacy



Social skills



Leadership

We are Achievers



Champions of Harmony Fest



Skating Winners of FRS National Sports Championship



Taekwondo State Championship Medallists



KSS English Debate Competition Winner



Awardees of Symphony of Splendours Contest



Winners of Story Spinner Competition



Victors of 3D Animated Videos & Visual Book Trailer Making



LEGACY OF EXCELLENCE

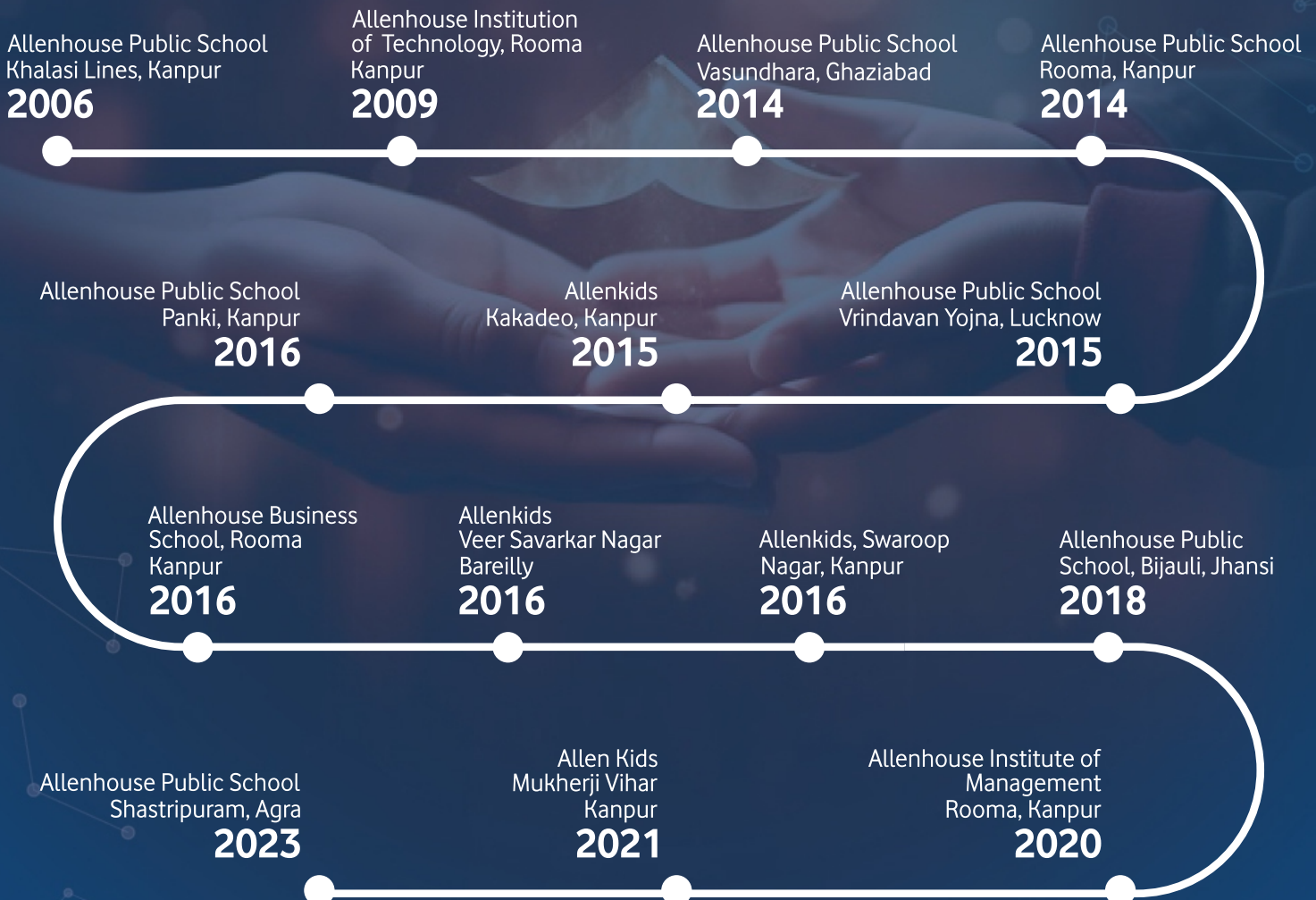
In 1996, Allenhouse ventured into the realm of education guided by the visionary leadership of Chairman Mr Mukhtarul Amin. Our educational spectrum spans preschools, K-12 and esteemed higher education institutions.

MISSION

Our mission is to revolutionise education by providing an immersive, personalised, and holistic learning experience to every child, cultivating intellectual agility, emotional intelligence, and the mindset needed to thrive in a rapidly evolving global landscape.

VISION

Our group envisions a dynamic and transformative learning ecosystem that empowers children to become visionary thinkers, compassionate global citizens and ingenious problem solvers.



📍 176 Kulgaon Road, Rooma, Kanpur, Uttar Pradesh-208008



09235400468



admissioncounsellor@allenhouserooma.com



www.allenhouserooma.com